

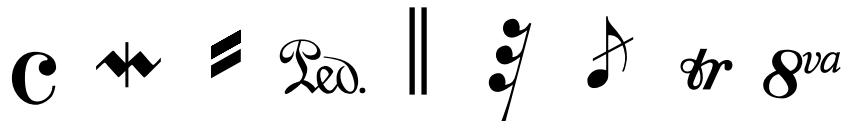
# Music Sudoku

Use logic to fill in the puzzle so that each of the 9 music symbols  $\text{C}$   $\text{tr}$   $\text{Ped.}$   $\parallel$   $\text{gva}$   $\text{tr}$   $\text{gva}$  appears exactly once in each row, column and 3x3 block. There is only one solution.

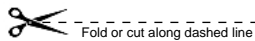
URL Shortcut: [www.MusicSudoku.com](http://www.MusicSudoku.com)

	$\parallel$	$\text{gva}$	$\text{Ped.}$					
					$\text{tr}$		$\text{gva}$	
					$\text{Ped.}$		$\text{tr}$	
								$\parallel$
$\text{tr}$								$\text{Ped.}$
$\text{tr}$								
	$\text{C}$		$\text{gva}$					
	$\text{gva}$		$\parallel$					
					$\text{tr}$	$\text{Ped.}$	$\text{tr}$	

18jp - 102068 - 0 More Puzzles & Solution Tips @ [joe-ks.com](http://joe-ks.com) & [sudoku.com](http://sudoku.com)



Original Hand-Crafted Puzzles © suJoku.com



## Music Sudoku Solution

$\text{gva}$	$\parallel$	$\text{gva}$	$\text{Ped.}$	$\text{tr}$	$\text{C}$	$\text{Ped.}$	$\text{tr}$
$\text{Ped.}$	$\text{tr}$	$\text{Ped.}$	$\text{C}$	$\text{gva}$	$\parallel$	$\text{gva}$	$\text{C}$
$\text{C}$	$\text{tr}$	$\text{C}$	$\text{gva}$	$\parallel$	$\text{Ped.}$	$\text{tr}$	$\text{gva}$
$\text{gva}$	$\text{Ped.}$	$\text{C}$	$\text{tr}$	$\text{Ped.}$	$\text{gva}$	$\text{tr}$	$\parallel$
$\text{tr}$	$\text{C}$	$\text{gva}$	$\text{Ped.}$	$\text{C}$	$\parallel$	$\text{tr}$	$\text{gva}$
$\text{tr}$	$\text{Ped.}$	$\parallel$	$\text{tr}$	$\text{C}$	$\text{gva}$	$\text{C}$	$\text{Ped.}$
$\text{Ped.}$	$\text{C}$	$\text{tr}$	$\text{gva}$	$\text{tr}$	$\text{Ped.}$	$\parallel$	$\text{gva}$
$\text{C}$	$\text{gva}$	$\text{tr}$	$\parallel$	$\text{Ped.}$	$\text{C}$	$\text{gva}$	$\text{tr}$
$\parallel$	$\text{gva}$	$\text{Ped.}$	$\text{tr}$	$\text{gva}$	$\text{tr}$	$\text{Ped.}$	$\text{C}$

Music Sudoku Puzzle #16641

Difficulty Level: Challenging

Publication Date: May 10, 2017